

HOOD CANAL DRIVE WETLAND MITIGATION SITE PHOTOS

This series of photos shows the west end of the delineated area as viewed from the foot bridge across Hawks Hole Creek as it starts to cross the west edge of the mowed meadow. This area will not be utilized for mitigation and it will remain in its current condition as the wetland mitigation project will end near the trees in the right background of Photo #9. Photo #10 looks easterly along the vegetation line along the stream as it approaches the foot bridge and Photo #11 looks toward the stream (lower right corner of photo) and the start of the wetland delineation (orange flag on right side of photo).

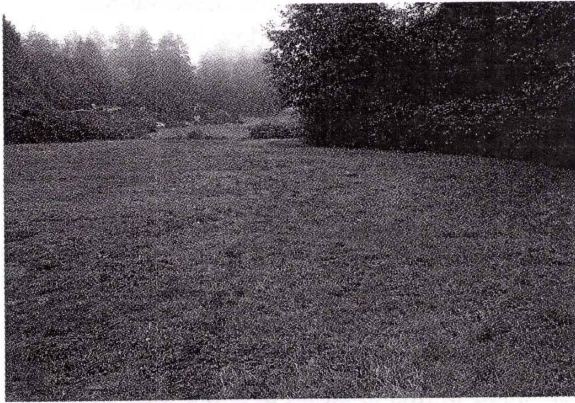


Photo #9

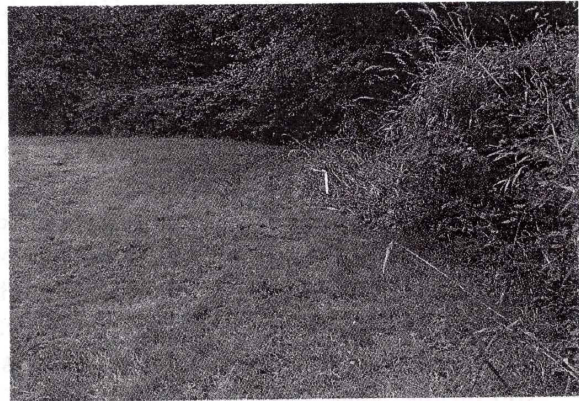


Photo #10



Photo #11