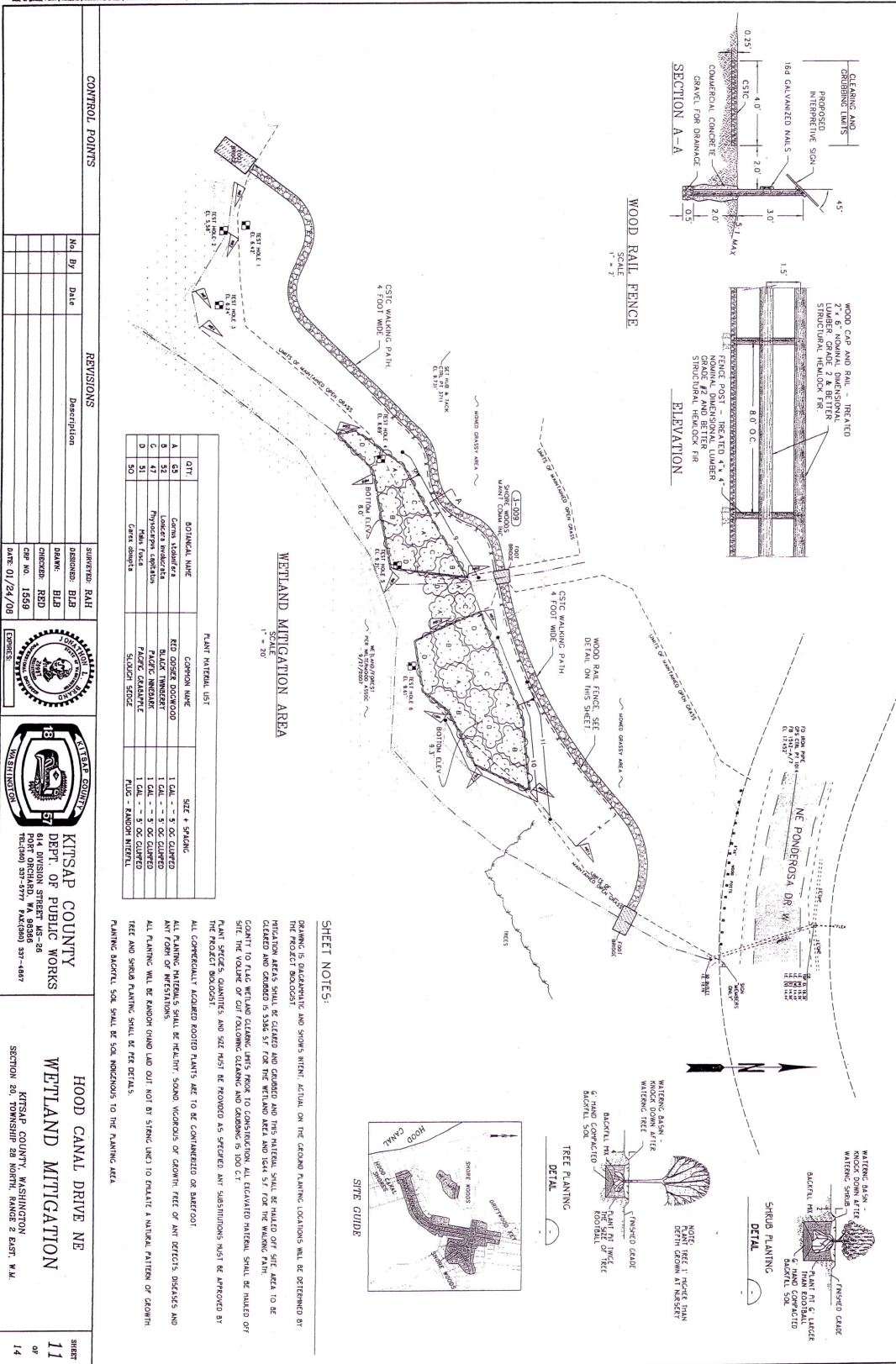


EXHIBIT "A"



SHEET NOTES:

- PLANNING IS DISCUSSANT AND SHOWS INTENT. ACTUAL ON THE GROUND PLANTING LOCATIONS WILL BE DETERMINED BY THE PLANTING CONTRACTOR.
- PLANTING AREAS SHALL BE CLEARED AND PREPARED AND THIS MATERIAL SHALL BE HAULED OFF SITE AREA TO BE CLEARED AND GRASSED IN 30 DAY PERIOD FOR THE BEST RESULTS AND SHALL BE FOR THE WETLAND PLAN.
- DESIGN TO PLANT WETLAND OUTLINE WITH ROCKS TO CONSTRUCTION ALL CLEARING MATERIAL SHALL BE HAULED OFF SITE TO THE OUTSIDE OF THE WETLAND OUTLINE AND GRASSED IN 30 DAY PERIOD.
- PLANT SPECIES, QUANTITIES AND SIZE MUST BE PROVIDED AS SPECIFIED AND SUBSTITUTIONS MUST BE APPROVED BY THE PROJECT MANAGER.
- ALL CONTRACTUALLY ACCORDED ROOTED PLANTS ARE TO BE CONTINGENT ON SUFFICIENT.
- ALL PLANTING MATERIALS SHALL BE HEALTHY, SOUND, VIGOROUS OF DESIRED TREE OR PLANT SPECIES, DEFENSE AND ANY FORM OF WEATHERING.
- ALL PLANTING WILL BE RANDOM CHAIN Laid OUT NOT BY STRIP LINES TO ENLARGE A NATURAL PATTERN OF GROWTH.
- TREE AND SHRUB PLANTING SHALL BE THE DETAILS.
- PLANTING BACKFILL SOIL SHALL BE SOIL INDICIOUS TO THE PLANTING AREA.

CONTROL POINTS		REVISIONS	
No.	By	Date	Description

QTY	BOTANICAL NAME	COMMON NAME	SIZE + SPACING
A	Cornus latifolia	RED OSAGE DOGWOOD	1 CAL. - 5 OC. CLUMPED
B	Lonicera involucrata	BLACK HAWKWEED	1 CAL. - 5 OC. CLUMPED
C	Physocarpus opulifolius	PLATEAU RUBY	1 CAL. - 5 OC. CLUMPED
D	Salix glauca	PLATEAU RUBY	1 CAL. - 5 OC. CLUMPED
E	Salix glauca	PLATEAU RUBY	1 CAL. - 5 OC. CLUMPED
F	Salix glauca	PLATEAU RUBY	1 CAL. - 5 OC. CLUMPED

DESIGNED BY	DRAWN BY	CHECKED BY	DATE

<p>KINSAP COUNTY DEPT. OF PUBLIC WORKS 614 DIVISION STREET MS-48 PORT ORCHARD, WA 98366 Tel: (360) 337-5777 Fax: (360) 337-4847</p>	<p>HOOD CANAL DRIVE NE WETLAND MITIGATION KINSAP COUNTY, WASHINGTON SECTION 23, TOWNSHIP 23 NORTH, RANGE 2 EAST, W.M.</p>
--	---